

# Off-Grid Series

## Imbricated 50Wp



Off-Grid



Anti-Reflective- shock  
resistant tempered glass



Suitable for AC and DC  
applications



Reliable and flexible  
product range



5 Year Warranty for  
Materials and Processing



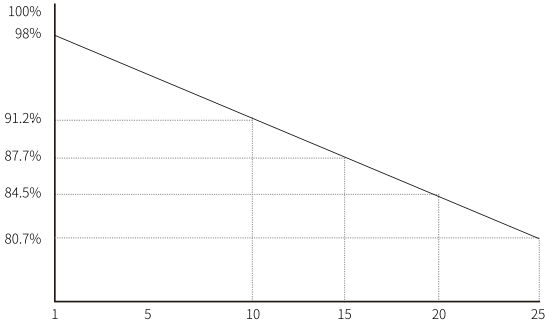
15 Year linear performance  
waranty

**14,93%**  
MAX MODULE  
EFFICIENCY

**0~+5W**  
POWER  
TOLERANCE

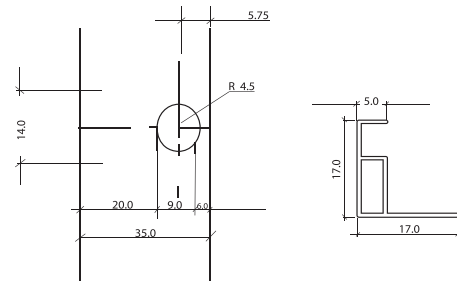
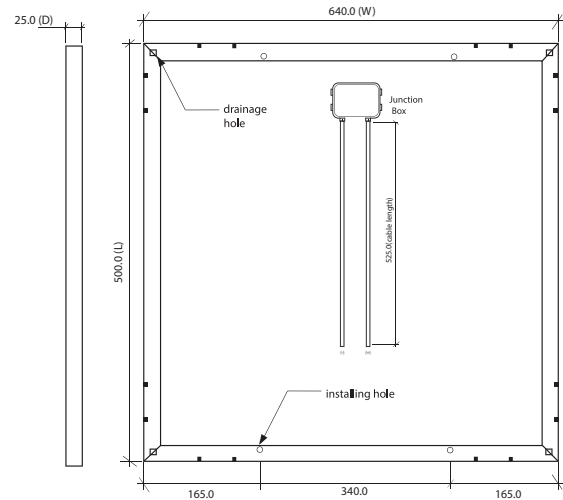
## Additional Value

### 15 Year Power Warranty



## Mechanical Parameters

Cell Orientation	36(4*9)
Junction Box	IP65, 1 bypass-diodes
Output Cable	520mm
Glass	3,2mm solar glass
Frame	Anodized aluminium
Weight	3.8kg
Dimensions (mm)	500*670*25



## Electrical Characteristics

Module Type	Testing Condition	Maximum Power	Open circuit voltage(V)	Short circuit current (A)	Voltage at Maximum power (V)	Current at Maximum Power (A)	Module Efficiency
50WP	STC	50	22,1	3,68	18	2,78	14,93%

## Operating Parameters

Operational Temp	minus 40°C to 85°C
Power Output Tolerance	0-+5Wp
Maximum System Voltage	1000V DC
Maximum Series Fuse Rating	10A
Nominal Operating Cell Temperature	48°C +-2°C

## Temperature Ratings STC

Temperature Coefficient of $I_s$	(+)0,04%/K
Temperature Coefficient of $V_{oc}$	(-)0,30%/K
Temperature Coefficient of $P_{max}$	(-)0,40%/K

**enersol**

www.enersol.africa · info@enersol.africa